



Multiple Application Platform Server

MAPS 6.11 Release Guide

Product version 6.11

Last updated 6/6/2024

Trademark, Publishing Statement, and Copyright Notice

© 1998-2024 Evisions. All rights reserved.

This software and related documentation are provided under a license agreement containing restrictions on use and disclosure and are protected by intellectual property laws. No part of this document may be reproduced, stored in or introduced into a retrieval system, or transmitted in any form or by any means (electronic, mechanical, photocopying, recording, or otherwise), or for any purpose, without the express written permission of Evisions.

The information contained herein is subject to change without notice and is not warranted to be error-free. Product features referenced herein for a period of time may not match product contents. Evisions does not warrant that the functions contained in the software will meet your requirements or that the operation of the software will be uninterrupted or error free. Evisions reserves the right to make changes and/or improvements in the software without notice at any time.

This software and documentation may provide access to or information on content, products, and services from third parties. Evisions and its affiliates are not responsible for and expressly disclaim all warranties of any kind with respect to third-party content, products, and services. Evisions and its affiliates will not be responsible for any loss, costs, or damages incurred due to your access to or use of third-party content, products, or services. Evisions does not endorse the content or developer of any products or web sites mentioned.

All information in this guide is designed for instructional purposes only. Evisions makes no guarantees regarding the accuracy or performance of any techniques used in this guide. Software configurations and environments may vary, and some techniques used in this guide may not operate efficiently under all configurations. This guide may contain examples of various technologies or products, which are the sole property and responsibility of their creators.

Trademarks are the property of the respective owners for any products mentioned herein.

Table of Contents

- What's New in MAPS 6.11?** **4**
 - MAPS Updates 4
 - Product versions 4
 - Installation 4
 - 1. Prepare test environment and ensure current backup 4
 - 2. Check for updates 4
 - 3. Allow update process to complete 5
 - 4. Verify the latest version is installed 5
- Group Categories** **6**
 - Assigning 6
 - Group Properties 6
 - Categories 7
- MAPS 6.11 Release Notes** **8**
- Getting Help** **9**
 - Can't find what you're looking for? 9

What's New in MAPS 6.11?

Evisions is pleased to announce the release of MAPS version 6.11, which includes the following changes:

- Group categories introduced to help filter group selection in some product areas.
- MAPS will now authenticate SAML SSO users in more configurations.
- Updating Institution Name within the Evisions MAPS license would sometimes cause a data validation error.
- Miscellaneous security enhancements.
- Stability and logging improvements.
- Additional enhancements and resolved issues.

We appreciate the feedback received from all of our users. Our products would not be what they are today without your continued support. If you have any comments or suggestions, please do not hesitate to [open a case with the HelpDesk](#) and let us know.

MAPS Updates

MAPS 6.11 is an update to the MAPS service (which includes the eLauncher) and MAPS Config. You should upgrade both components concurrently.

Product versions

The latest versions of MAPS included in this release are:

- MAPS service 6.11.0.2706 / MAPS Config 6.11.0.1508 / eLauncher 6.10.0.7 / EAL 1.1.7.34

Installation

1. Prepare test environment and ensure current backup

We highly recommend installing updates in a test environment before applying them to your production environment. You should make sure that a current backup is available in case of any unforeseen issues. To create a full backup of your MAPS environment, go to the **Server -> Backups** screen in MAPS and click **Backup Now**.

2. Check for updates

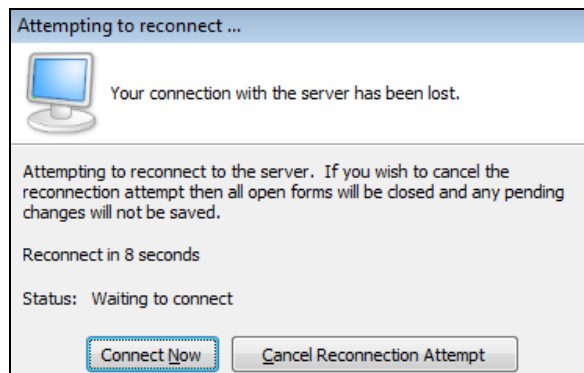
Click the **Check for Updates** button in MAPS Config to view available updates.

If you need to apply updates prior to the 6.11 update, please refer to the appropriate [release guide\(s\)](#) before proceeding.

It is possible to apply updates when users are on the system; however, to avoid the possibility of losing unsaved work we recommend applying updates during off hours.

[3. Allow update process to complete](#)

When applying updates to the MAPS service you will be temporarily disconnected from the server:



The update process may take a few minutes to complete. **Do NOT cancel the reconnection attempt or manually restart the server.** You will automatically be reconnected to the server once the update has been applied.

[4. Verify the latest version is installed](#)

To ensure that you are on the most current version, continue clicking the **Check for Updates** button and applying the updates until no new updates are available.

[Please Provide Us with Your Feedback!](#)

As always, we welcome any [feedback or suggestions](#) you may have. We very much appreciate your thoughts and suggestions, so please keep the great ideas coming!

Group Categories

Groups may now be associated with one or more specified categories. Categories may be used to limit or promote the visibility of groups in certain selector boxes. This may be useful when managing large numbers of groups, or simply needing to filter down the selection of groups to those relevant to a search.

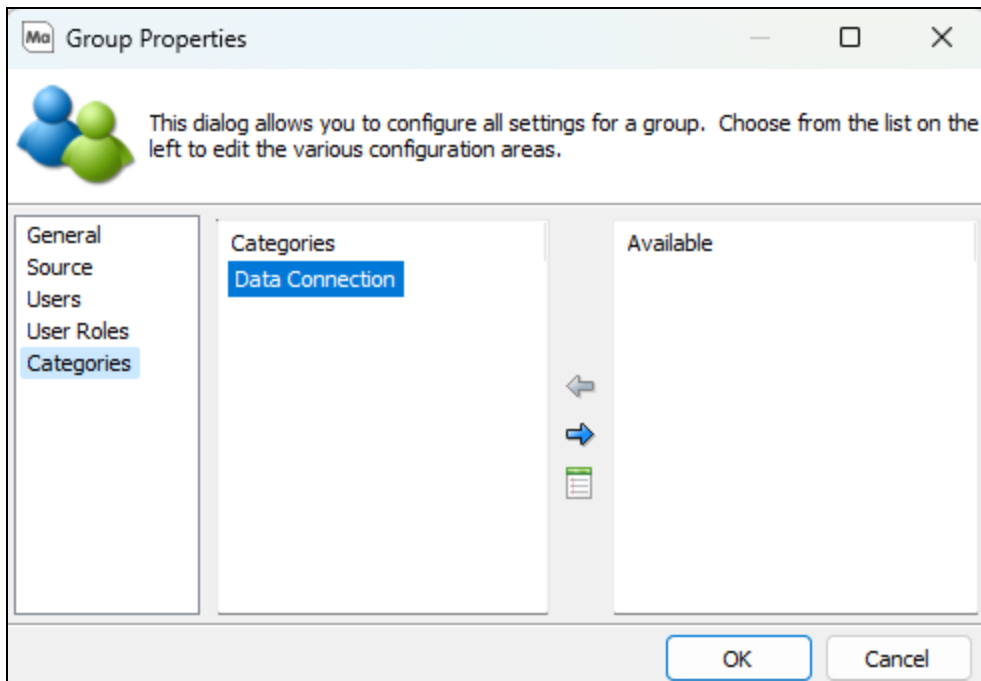
The MAPS 6.11 release introduces the Data Connection category type, which will be used in various selectors in the MAPS environment. This restricts the **Primary group for data connection** selector in Argos to display only those groups associated with the Data Connection category. This helps filter out groups not associated with data connections in the selector.

Assigning

Groups may be associated to a category in one of two ways: assigning a category while adding or editing a group, or by assigning groups to a category.

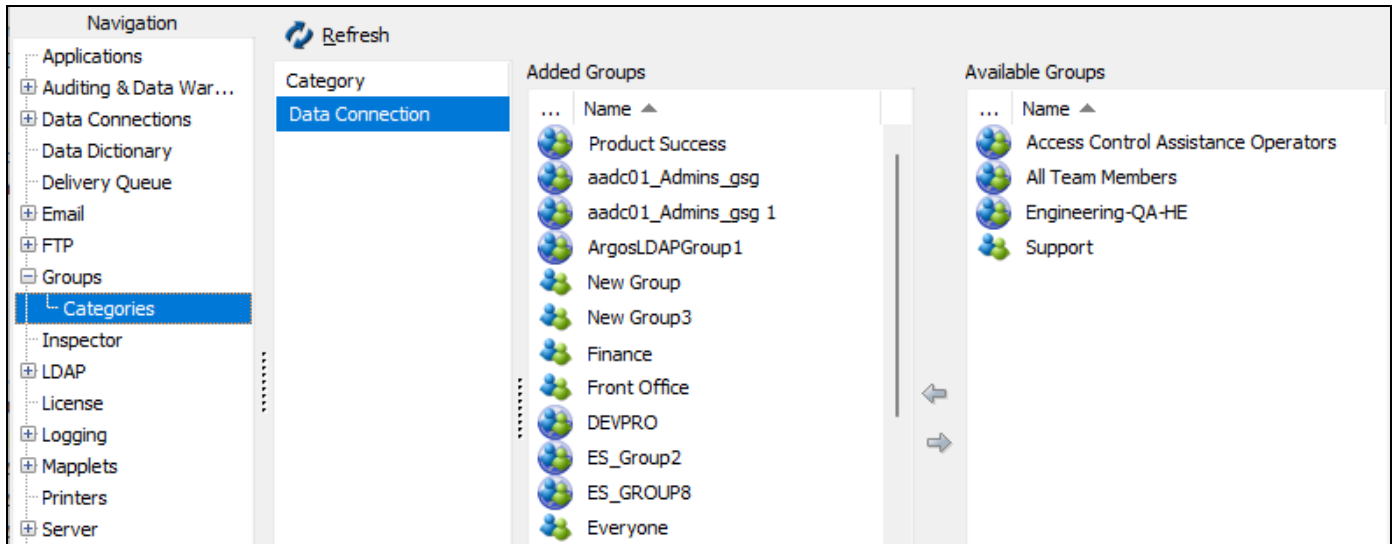
Group Properties

The Group Properties window now contains a **Categories** tab.



You may navigate to this tab while adding a new, or editing an existing group. Here you will see the list of categories already associated with this group under the **Categories** column, while those categories listed under the **Available** column are available to be assigned if desired. To assign the category to this group, use the left and right arrows to swap categories between panes, drag and drop, or double click on the category you wish to move.

Categories



Selecting a category from the **Category** list displays all groups that are associated with that category under the **Added Groups** column. The **Available Groups** column lists all groups that are available to associate with this category. Similar to the assigning of categories to groups, groups may be assigned in or out of this category by using the left and right arrows to swap between panes, dragging and dropping, or by double clicking on a group.

MAPS 6.11 Release Notes

MAPS Service 6.11.0.2706 / MAPS Config 6.11.0.1508 / eLauncher 6.10.0.7 / EAL 1.1.7.34

MAPS

Enhancements

Area	Description	Issue number
Database	Updated the MAPS Database Configuration utility to support MAPS 6.11.	MAPS-3619
Data Connections	Objects using the same Data Connection override within the same DataBlock can now be populated by reusing a single database connection.	MAPS-3589
Groups	Added the Categories tab to the MAPS Navigation Tree to enhance group filtering and management.	MAPS-3600
Groups	Categories may now be assigned to a group via the Categories tab within the Group Properties menu.	MAPS-3596
Log Files	Multiple minor improvements to logging.	MAPS-3588
SAML	MAPS will now authenticate SAML SSO for users with multiple locations listed.	MAPS-3530
Security	Allowed for additional special character functionality to be included in URL paths for increased encoding capability.	MAPS-813

Resolved Issues

Area	Description	Issue Number
Data Connections	Repeating access violations were occurring for nested Data Connection Groups that were being moved into the root Data Connection Group.	MAPS-3612
EAL	Corrected the modified date for Evisions Application Launcher files.	MAPS-3467
Encryption	After changing an institution name, Doris and REST Connector data was failing to re-encrypt.	MAPS-3583

Getting Help

For information on using the software, please refer to the product Help, which contains detailed information on all aspects of the product.

If you are having problems with the installation or configuration, you can search our [support site](#), which includes a knowledge base of common issues. If you are unable to find the solution, submit a HelpDesk request with a detailed explanation of the problem you are experiencing.

Please do not hesitate to contact the Evisions HelpDesk if any questions or problems arise. We are here to help you and want to ensure your success.

Can't find what you're looking for?

We would love to make our documentation better! If you have a moment to let us know what we missed or how we can make the help more useful, please email us at TechDocs@evisions.com.